

FOR USE IN AMBIENT AND GENERAL LIGHTING APPLICATIONS

PROJECT  
TYPE  
PART NUMBER

## FEATURES

- Suitable for Wet or Washdown Applications
- Superior light quality and photometric efficiency
- Constant current platform offers superior efficacy
- Dimming options available
- 0-10V Dimming Standard



## SPECIFICATIONS

### CONSTRUCTION

5VA rated fiberglass composite housing

### LENS

100% virgin impact resistant acrylic. Available in polycarbonate for high abuse environments or with a DR blend for maximum chemical resistance.

### CONSTRUCTION

No tools are required for ballast access. Captive stainless steel or polycarbonate latches secure the lens.

### ELECTRICAL

LED Light Engine designed for reliability and long life operation  
Standard 0-10V dimming to 1%  
120 - 277 V standard; 347V or 480V available

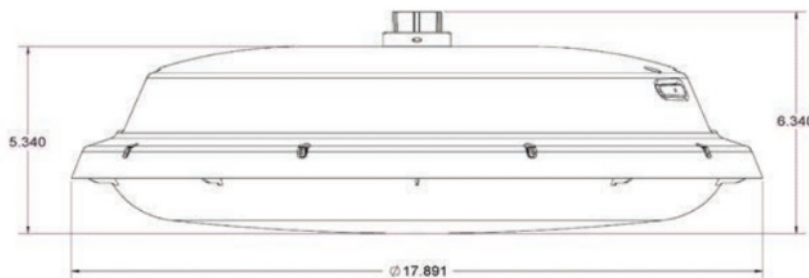
### CONTROLS

Individual or grouping control with many solutions available  
Consult factory for specific requirements

### LISTINGS

DesignLights Consortium qualified, see DLC QPL  
ETL safety certified for damp locations  
Standard 5 year warranty / 10 year warranty available upon request

## DIMENSIONAL INFORMATION



**ORDERING INFORMATION**

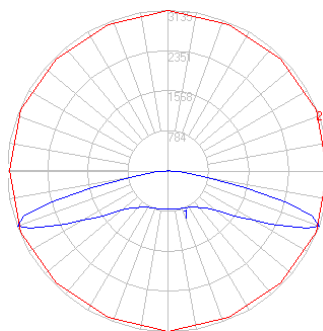
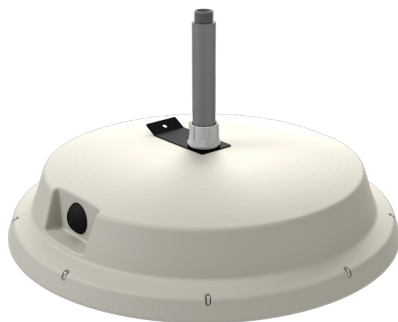
STYLE	SIZE	LIGHT ENGINE		COLOR TEMP	OPTIONS
<b>F</b> FIXTURE	<b>22GA</b> 2' x 2'	<b>FROSTED LENS</b>	<b>CLEAR LENS</b>	<b>35</b> 3500K	<b>FR</b> FROSTED LENS
		<b>L1N0</b> 30W 4310 LUMENS	<b>L1N0</b> 30W 4571 LUMENS	<b>40</b> 4000K	<b>CL</b> CLEAR LENS
		<b>L1N5</b> 35W 4973 LUMENS	<b>L1N5</b> 35W 5274 LUMENS	<b>50</b> 5000K	<b>OCC</b> OCCUPANCY SENSOR
		<b>L1M0</b> 40W 5620 LUMENS	<b>L1M0</b> 40W 5960 LUMENS		
		<b>L1H0</b> 50W 6882 LUMENS	<b>L1H0</b> 50W 7299 LUMENS		
		<b>L1V0</b> 60W 8120 LUMENS	<b>L1V0</b> 60W 8612 LUMENS		

Light Engines are calculated based on 5000K color temperature

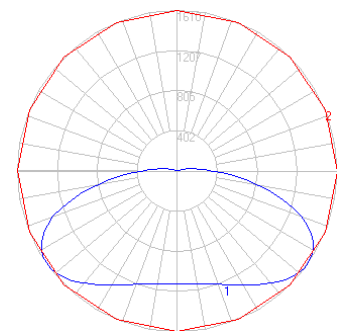
**CUSTOM OPTIONS**

**ADDITIONAL GRAPHICS**

**PHOTOMETRY**



Polar Plot  
Clear Lens



Polar Plot  
Frosted Lens

