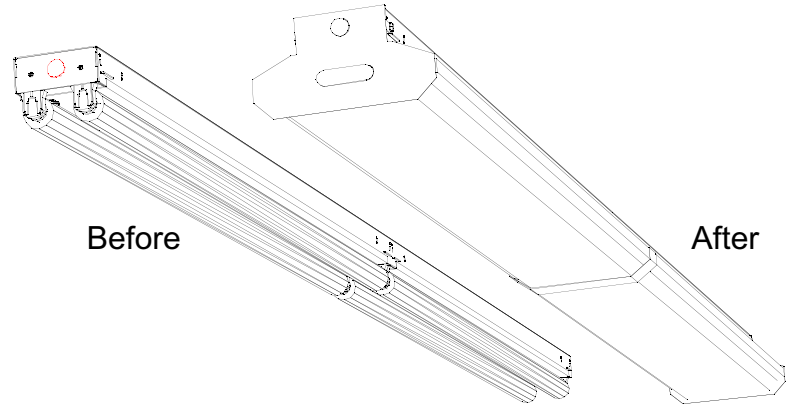


Features

Ideal for schools, hospitals, and office space

Superior light quality, 89.2% photometric efficiency

Converts an out-dated strip or egg-crate fixture to a modern, high performance wrap



Technical Data

Socket Bars/Endplates: 20ga. (0.032") pre-painted die formed with sufficient knockouts for electrical supply. Endplates are embossed for additional strength.

Finish: All cold rolled steel parts are painted with a smooth, glossy, highly reflective white paint.

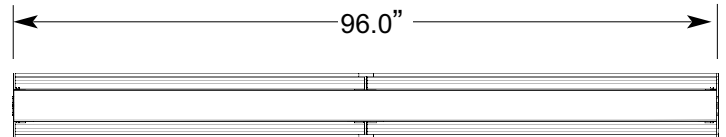
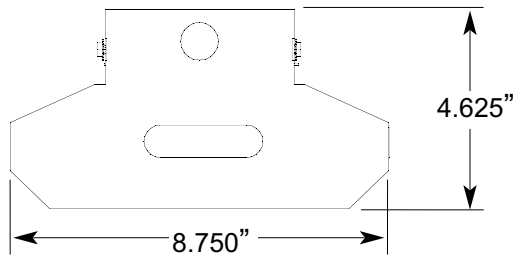
Lens: Clear 100% virgin acrylic lens with pattern 12 prisms.

Reflector: Can be ordered with a 95% specular, a 85% specular, or a 92% diffuse white enamel. Substrate is 0.020" high quality aluminum. The reflector profile is optimized using computer analysis and manufactured using state of the art CNC equipment. A protective premask is applied to all reflective surfaces prior to manufacture.

Kit Includes: Two embossed endplates, three socket bars, two specular reflectors, two four-foot lenses, a belly band, quarter turn fasteners, and self-tapping screws.

Construction: For retrofit, the existing endplates, ballast covers, and socket bars are removed. The new endplates and socket bars are securely attached to the fixture body with self-tapping screws. The reflectors are attached to the socket bars with quarter-turn fasteners. No tools are required for reflector installation and removal. The lens attaches to the reflector with a compression fit.

Installation



Highlights

Existing 4.25" thru 5.00" channel

Computer designed, CNC formed 0.020" specular aluminum reflector

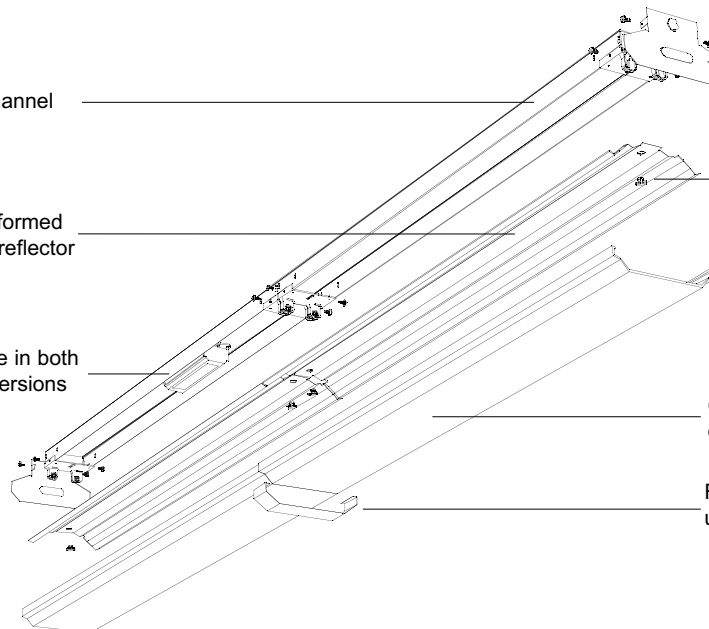
Electronic ballasts available in both standard and high lumen versions

Endplates embossed for additional strength.

Quarter-turn fasteners allows reflector removal and installation without tools

Clear acrylic lens uniformly distributes the light

Formed metal band conceals the union of the lens sections



Photometrics

Case Study

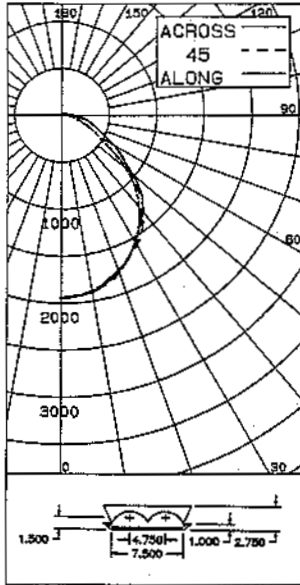


LSI Laboratories
Independent Testing Since 1979

LSI Laboratories Inc.
7830 E. Evans Road
Scottsdale, Arizona 85260 USA
Tel: 602-948-5782 • Fax: 602-981-0375

CERTIFIED TEST REPORT NO. LSI12486

ENERGY SOLUTIONS CATALOG #LSSWRAP01PM 1 X 4 WRAPPED FIXTURE
WITH SPECULAR REFLECTOR
TWO FO32/41K 32 WATT FLUORESCENT LAMPS. LUMEN RATING = 2900 LMS.
ENERGY SAVINGS ES-2-T8-32-120-A BALLAST OPERATING AT 120 VAC & 58 WATTS



CANDLEPOWER SUMMARY					OUTPUT LUMENS
ANGLE ALONG	22.5	45	67.5	ACROSS	
0	1944	1944	1944	1944	186
5	1924	1927	1933	1938	1931
15	1840	1841	1860	1844	1831
25	1678	1692	1674	1680	1668
35	1427	1468	1487	1445	1440
45	1096	1164	1159	1172	1199
55	628	751	790	753	773
65	339	392	484	518	490
75	170	219	310	329	319
85	55	109	151	168	176
90	1	44	86	102	100
95	0	30	66	75	74
105	0	12	39	44	45
115	1	6	24	31	33
125	2	6	14	21	25
135	2	5	9	11	14
145	3	4	7	8	9
155	5	4	6	7	8
165	5	5	5	4	5
175	4	4	5	4	6
180	4	4	4	4	4

ZONE	LUMENS	% LAMP	% LUMINAIRE
0-30	1476	25.46	29.68
0-40	2385	41.14	47.96
0-60	3944	68.00	79.29
0-90	4837	83.43	97.25
40-90	2451	43.27	49.29
60-90	893	15.40	17.96
90-180	136	2.36	2.75
0-180	4974	85.77	100.00

** EFFICIENCY = 85.8% **

S/MH = 1.2
SC = 1.2

LUMINANCE SUMMARY - CD./SQ.F.

ANGLE ALONG	45	ACROSS
45	6672	6472
55	4712	5243
55	3451	4116
75	2832	3821
85	2705	3595

CERTIFIED BY: *Tom Levin* DATE: APR 25, 1996
PREPARED FOR: ENERGY SOLUTIONS INC.
ST. PAUL, MN

TESTED ACCORDING TO IES PROCEDURES. TEST DISTANCE EXCEEDS FIVE TIMES THE GREATEST LUMINOUS OPENING OF LUMINAIRE.

40' x 40' x 10' Classroom

Reflectances

Ceiling 75% Walls 50% Floor 20%

Fixture

ESI Retro-Wrap 1' x 8'
Specular Silver Reflector
(4) 32W FO32 T8 Lamps
Standard Power Ballast (0.93)

Layout

20 Fixtures mounted on a
8' by 10' grid

Results

UPS: 1.45 watts/sq.foot
Illuminance: 106fc (at 2.5' from floor)

Summary

Total Fixture Efficiency **85.8** Mounting Height Ratio **1.2**

Coefficients of Utilization (%)										
Ceiling Refl	80				70				50	
	70	50	30	10	70	50	30	50	30	10
Wall Refl	70	50	30	10	70	50	30	50	30	10
RCR = 0	102	102	102	102	99	99	99	94	94	94
1	93	90	86	83	91	88	84	83	81	79
2	86	79	74	69	84	78	73	74	70	66
3	79	71	64	59	77	69	63	67	61	57
4	73	63	56	51	71	62	56	60	54	50
5	67	57	49	44	65	55	49	53	47	43
6	62	51	44	39	60	50	43	48	42	38
7	57	46	39	34	56	45	38	44	37	33
8	53	41	34	29	51	41	34	39	33	29
9	49	37	30	26	47	37	30	35	29	25
10	45	34	27	23	44	33	27	32	26	22

Test Report No. LSI12486

Ordering Information

Part Number = Fixture Size + Reflector Material + # Lamps + Channel Width + Options

(Example K-18EARW232-4.25 = 1'x8' Retrofit Kit with an enhanced aluminum reflector for 2 - 4' lamps and a 4.25" channel)

Size	Reflector	Design	# Lamps	Wattage	Channel Width
K-14 - 1' x 4' Kit	EA - Enhanced Alum	RW - Retro-wrap	1	32	4.25"
K-18 - 1' x 8' Kit	AA - Anodized Alum		2		4.50"
	WR - White Enamel		3		4.75"
			4		5.00"