

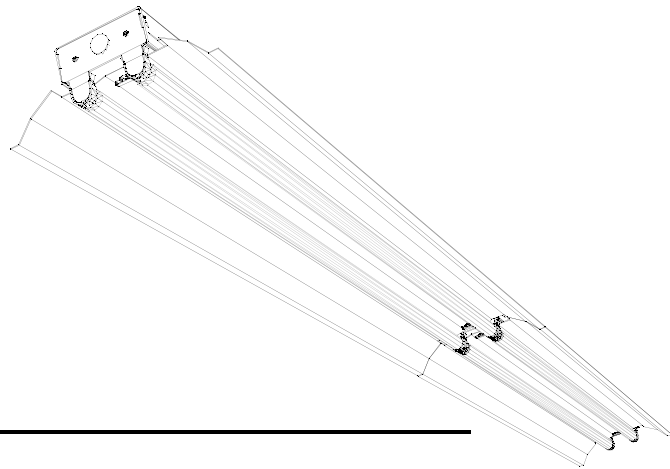
**Features**

*Ideal for retail and warehouse space*

*Superior Light Quality*

*Snap-in end plates and socket bars*

*Computer designed specular reflectors*



**Technical Data**

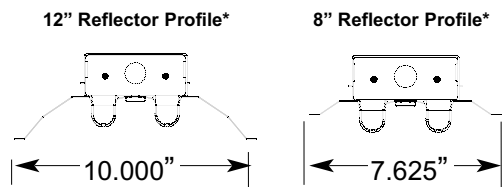
**Housing:** 22ga. (0.032") pre-painted die formed steel with sufficient knockouts for mounting and electrical supply.

**Finish:** All cold rolled steel parts are painted with a smooth, glossy, highly reflective white paint.

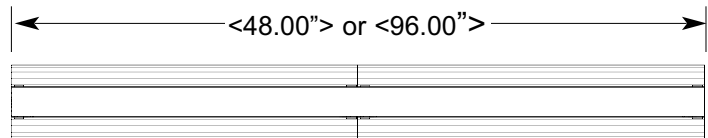
**Reflector:** Can be ordered with a 95% specular, a 85% specular, or a 92% diffuse white enamel. Substrate is 0.020" high quality aluminum. The reflector profile is optimized using computer analysis and manufactured using state of the art CNC equipment. A protective premask is applied to all reflective surfaces prior to manufacture.

**Construction:** The solid 0.032" steel body provides added rigidity. The socket bars and end-plates securely snap into place. The reflectors are attached to the fixture body with quarter-turn fasteners.

**Installation**



\*Also available in a 1Lamp and 3Lamp Cross-section



**Highlights**

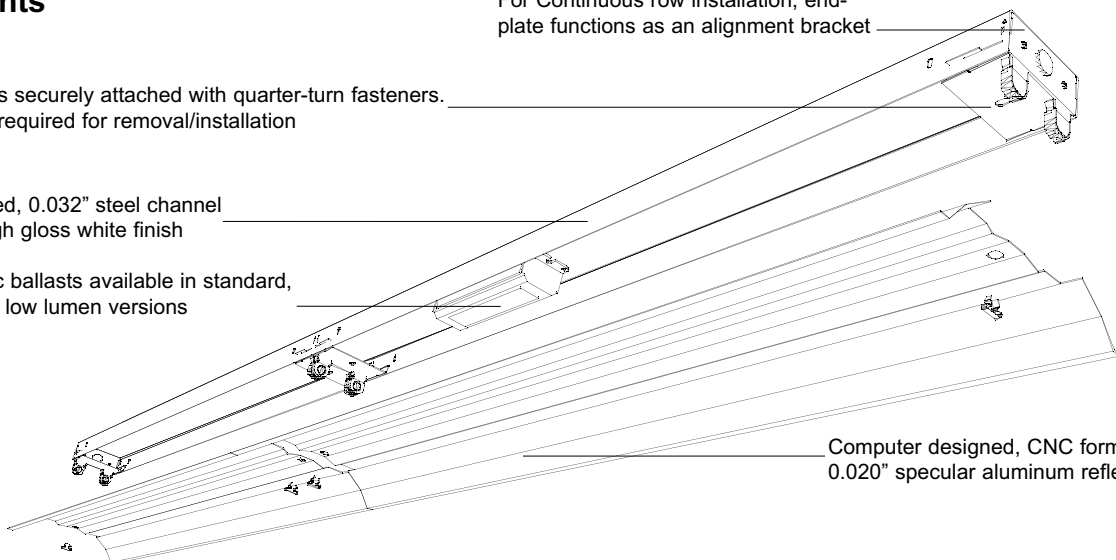
Reflectors securely attached with quarter-turn fasteners. No tools required for removal/installation

Die formed, 0.032" steel channel with a high gloss white finish

Electronic ballasts available in standard, high, and low lumen versions

For Continuous row installation, end-plate functions as an alignment bracket

Computer designed, CNC formed 0.020" specular aluminum reflector



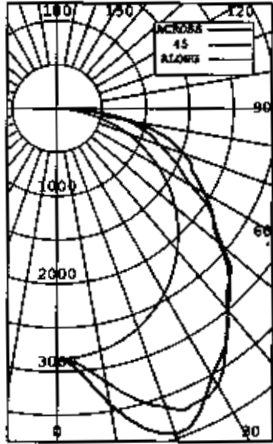
Photometrics (Shown for 1x8 4-32W with 12" Enhanced Alum Reflectors)



Lighting Sciences Inc.  
7830 E. Evans Road  
Scottsdale, Arizona 85260 USA  
Tel: 480-991-9260 • Fax: 480-991-0375

CERTIFIED TEST REPORT NO. LSI 14155

ENERGY SOLUTIONS 1 X 8 STRIP LUMINAIRE, CAT# 18EAR2  
WITH 95 SPECULAR R2 REFLECTOR  
FOUR PHILIPS 32W FLOORESCENT LAMPS, CAT# F32T8/TL841. LUMEN RATING = 3000 LMS.  
ONE ADVANCE REL-4P32-RH-TP BALLAST OPERATING AT 120 VAC AND 110 WATTS



ANGLE	ALONG	45	67.5	ACROSS	OUTPUT LUMENS
0	2856	2856	2856	2856	
5	2841	2870	2937	2959	292
10	2804	2920	3171	3372	3439
15	2743	2995	3439	3703	3778
20	2662	3077	3628	3894	3950
25	2558	3130	3705	3859	3823
30	2431	3138	3639	3518	3511
35	2282	3082	3323	3302	3315
40	2118	2965	3007	3046	3000
45	1940	2778	2753	2671	2765
50	1745	2447	2389	2497	2436
55	1540	2048	2163	2092	2149
60	1318	1731	1752	1886	1922
65	1085	1385	1499	1641	1691
70	849	1065	1250	1479	1534
75	596	759	1055	1221	1279
80	333	537	783	850	858
85	110	297	361	405	398
90	15	17	32	44	50

ZONAL LUMENS AND PERCENTAGES

ZONE	LUMENS	% LAMP	% LUMINAIRE
0-30	2831	23.60	24.61
0-40	4781	39.84	41.54
0-60	8638	71.99	75.06
0-90	11508	95.91	100.00
40-90	6727	56.06	58.46
60-90	2870	23.92	24.94
90-180	0	.00	.00
0-180	11508	95.91	100.00

\*\* EFFICIENCY = 95.9% \*\*

LUMINANCE SUMMARY - CD./SQ.M.

ANGLE	ALONG	45	ACROSS
45	4662	6642	6671
55	4563	6433	6392
65	4362	6050	5925
75	3914	6933	8432
85	2149	7048	7783

S/MR = 1.6  
SC(ALONG) = 1.3, SC(ACROSS) = 1.6

CERTIFIED BY: *[Signature]* DATE: JUN 15, 1999  
PREPARED FOR: ENERGY MASTERS ST. PAUL, MN

TESTED IN ACCORDANCE TO IES PROCEDURES.

Ordering Information

Part Number = Fixture Size + Material + Design + # Lamps + Lamp Wattage + Voltage + Ballast Type + Options

(Example F-18STEA12S432277H = 1'x8' Strip with an enhanced alum. refl., 12S Design 4-32W lamps, 277 volts, and a high power ballast)

Size	Reflector	Design	# Lamps	Lamp Watts	Voltage	Ballast
F-14ST - 1' x 4'	EA - Enhanced Alum	8S - 8" Std. Distribution	1	32	120	N - Normal
F-18ST - 1' x 8'	AA - Anodized Alum	12S - 12" Std. Distribution	2	54	277	H - High Ballast Factor
	WR - White Enamel		3		UNV	L - Low Ballast Factor
			4			
			6			